



G.7. Winter Dress Blue

This winter uniform may be worn for general office wear, visits to Coast Guard units, and appropriate assignments to duty. It is the basic cold climate, non-operational uniform and may be worn in lieu of the Service Dress Blue uniform except for occasions where the civilian equivalent is coat and tie. It is authorized for wear in a travel status pursuant to Coast Guard assignment to duty. **This option is only authorized from 1 November through 31 March.** (see Figure 10-24)

-
- G.7.a. Trousers Trousers shall be the same as those prescribed for the Service Dress Blue uniform.
-
- G.7.b. Belt A black web belt with a silver buckle and tip is worn. The buckle may be plain or display an approved Auxiliary emblem.
-
- G.7.c. Shirt A long sleeve, Coast Guard blue winter shirt that matches the color and material of the trousers is worn. The developmental Winter Dress Blue shirt with permanent silicone creases shall not be authorized for Auxiliary wear until approved by the Coast Guard Uniform Board as a standard sea bag item for active duty personnel.
-
- G.7.d. Tie A Coast Guard blue four-in-hand tie of suitable length is worn. Clip-on types are optional.
-
- G.7.e. Socks Socks shall be black, made of knitted or rib knit, undecorated material.
-
- G.7.f. Shoes Shoes shall be black, with heels, made of smooth leather or a synthetic material. Shoes shall be low cut of plain style without decoration. There shall be no stitching or seams across the toe. Heels shall be no higher than 1 inch. Sole edges, heels, and laces must be black.
-
- G.7.g. Insignia Metal collar devices are worn.
-
- G.7.h. Breast Insignia/Devices Name tag, ribbons, badges, and devices are worn.
-
- G.7.i. Hat The combination cap and garrison cap are the prescribed hats to be worn with this uniform. Ball caps of any type are not authorized to be worn with this uniform. The cold weather cap may be worn in accordance with the provisions of section D.3.e of this chapter.
-



	All white or all black, low top, athletic shoes with nonskid/nonmarking soles are also authorized for Auxiliarists.
--	---

H.3.f. Insignia	Metal collar or sew-on insignia are worn with this outfit. No insignia are worn on the ODU T-shirt.
-----------------	---

H.3.g. Breast Insignia/Devices	Depending upon the type of shirt worn, name tags/tapes and insignia/devices are worn in accordance with section F.4 of this chapter. Badges and ribbons are not worn.
	No insignia are worn on the ODU T-shirt, the Operations Polo Shirt, or the VE polo shirt.

H.3.h. Hat	The blue working utility cap, Auxiliary ball cap, and Coast Guard unit ball cap (if authorized) are the prescribed hats to be worn with this uniform. The Tilley hat may be worn in accordance with section D.3.f of this chapter.
------------	--

H.3.i. Procurement of Items	Instructions concerning the procurement of the items for this outfit are contained in the Coast Guard Uniform Regulations, COMDTINST 1020.6 (series).
-----------------------------	---

H.4. Operational Dress Uniform	<p>The Operational Dress Uniform (ODU) is the principal general purpose, every day Coast Guard uniform. It may be worn year-round primarily as a field utility and watchstanding uniform. It is intended for wear in any situation that does not require a dress uniform, including patrols, vessel safety checks, and Coast Guard unit office wear at Commanding Officer's discretion. It shall not be worn as a substitute for coveralls.</p> <p>Auxiliarists shall carefully consider the propriety of ODU wear in settings that are highly representational in nature, where the type of interaction with the public dictates more formality, or settings in an interagency environment. In DoD, joint or inter-service environments, wear of the ODU should align with the DoD equivalent uniform of the day. The ODU should not be worn for visits to civilian agencies or non-Coast Guard organizations unless the prescribed uniform of the day is the ODU or DoD equivalent at the visit site. However, in some cases the ODU may be appropriate due to the operational nature of the visit or the nature of the work to be performed. It may also be worn during the following authorized circumstances:</p> <ol style="list-style-type: none"> a. While traveling in government vehicles, vessels, or aircraft, or while traveling on orders in a foreign country (if approved by the corresponding U.S. Embassy). b. While commuting to and from duty assignments, using either private or public forms of transportation (including brief stops in convenience or retail stores associated with the commute).
---------------------------------------	--



-
- c. While in an educational environment at other Coast Guard or DoD agencies (as directed by the appropriate Commanding Officer) or Auxiliary member training and conference events.

Although there is no weight standard in the Auxiliary, the ODU shall only be worn in Coast Guard standard sizes from Coast Guard standard stock from a Coast Guard exchange or the UDC. ODU substitution look-alikes are not authorized. Like other Coast Guard uniforms, the ODU must fit properly. (see Figure 10-30)

Auxiliarists shall pay particular attention to appearance while wearing the ODU. It shall be serviceable, well-maintained, clean, and not faded or discolored. In addition to the following general provisions, proper wear and maintenance shall be as prescribed in the Uniform Regulations, COMDTINST M1020.6 (series), or other relevant, interim Coast Guard policy. The untucked version of the ODU has black Coast Guard emblems embossed on them in several locations. Untucked ODUs are not produced without the emblems. Therefore, Auxiliarists are authorized to wear the untucked ODU version with the embossed Coast Guard emblems. Moreover, although the untucked ODU is the prescribed version, Auxiliarists are authorized to wear the tucked ODU version until no longer serviceable.

H.4.a. Trousers Trousers may be tucked into the boots or bloused. When bloused, place blousing bands between the second and third boot eyelet. If tucked into boots, the trouser legs should be shaped to present a bloused appearance. Trouser legs shall be worn straight with boat shoes. Cargo pockets may be used, but items stowed shall not take away from a smart appearance.

H.4.b. Belt The buckle and belt tip of the standard 1¼-inch black ODU belt must not be chipped or discolored. The bitter end shall extend 2 to 4 inches past the belt buckle (subdued version) on the wearer's left. The basic riggers belt is an authorized optional belt for ODU wear. This belt is a 1¾-inch black nylon belt. When worn, the bitter end shall stop behind, but not past, the first belt loop on the wearer's left. This will require the belt be passed through the belt loops from the right, the opposite of other men's belts. This belt also comes in one size, and it must be properly cut to size.



-
- H.4.c. Shirt The ODU top is an integral part of the uniform, and the Coast Guard dark blue crew neck T-shirt is the prescribed undergarment. If the ODU top sleeves are rolled up, they shall be done so in prescribed accordion style with only the cuff showing. The ODU top may only be removed temporarily when working in demanding, prolonged operations in high temperatures. In all such cases, the Coast Guard dark blue crew neck T-shirt shall be worn stenciled or embroidered with the words “USCG AUXILIARY” across the front left chest in white ¾-inch tall block-style letters (they must be stenciled identically to promote unit identity and professional appearance), and it shall be in good condition with no tears or stains. It may be 100 percent cotton or be made of a cotton-polyester blend to facilitate moisture wicking. Such relaxed ODU wear is not authorized for routine wear in the office environment, in public, nor for wear while commuting to and from duty assignments, including in private vehicles. The Auxiliary Operations Polo Shirt may be worn in lieu of the ODU top for patrol activities.
-
- H.4.d. Socks Socks should be black, undecorated. If wearing the hot weather version, white crew length socks shall be worn.
-
- H.4.e. Shoes Shoes shall be well-blackened 8-inch or 10-inch safety boots. When worn in an office, boots shall be shined. Excess laces shall be tucked away so they cannot be seen.
- The boat shoe, (dark blue or brown leather, low cut of moccasin type construction with functional rawhide lacing, brass eyelets, and nonmarking sole) is an authorized option for Auxiliarists, regardless of type ODU that is worn (regular or Hot Weather uniform).
-
- H.4.f. Insignia All insignia, except that for hats worn with the ODU, shall be in good repair and shall be embroidered (direct embroidery on the shirt is not authorized), including collar and specialty insignia. If embroidered versions of certain insignia have not yet been fabricated and made available through the Auxiliary materials network, then metal versions may be worn until they are available.
- All embroidered collar insignia, with the exception of Flotilla Commander (FC), District Captain (DCAPT), District Chief of Staff (DCOS), and their corresponding appointed staff officer insignia, shall be placed on the imaginary line bisecting the angle of the collar with the base of the insignia (not the embroidered patch) approximately 1⅛ inches from collar point. Due to their horizontal format, embroidered FC and DCAPT/DCOS insignia shall be placed 1½ inches from the point.
-



H.4.g. Breast
Insignia/Devices

Direct embroidery on the shirt is not authorized.

Insignia shall be centered directly above the “USCG AUXILIARY” cloth tape immediately above the wearer’s left hand pocket. Only one embroidered insignia is authorized. If an Auxiliarist has earned more than one insignia, then the insignia worn shall be at the discretion of the Auxiliarist. Embroidered insignia shall be the same size as the metal insignia, centered on a tape the full width of the pocket. The tape shall not exceed the width of the pocket. Temporary or conditional qualification insignia shall not be worn on the ODU.

Incumbent Commanding Officers and Officers-in-Charge are authorized to wear the embroidered command ashore or afloat devices centered directly above the wearer’s nametape. These embroidered devices shall be approximately the same size as the metal versions. The same parameters apply to the wear of the embroidered AUXOP device, which is the only device authorized for wear by Auxiliarists on the ODU.

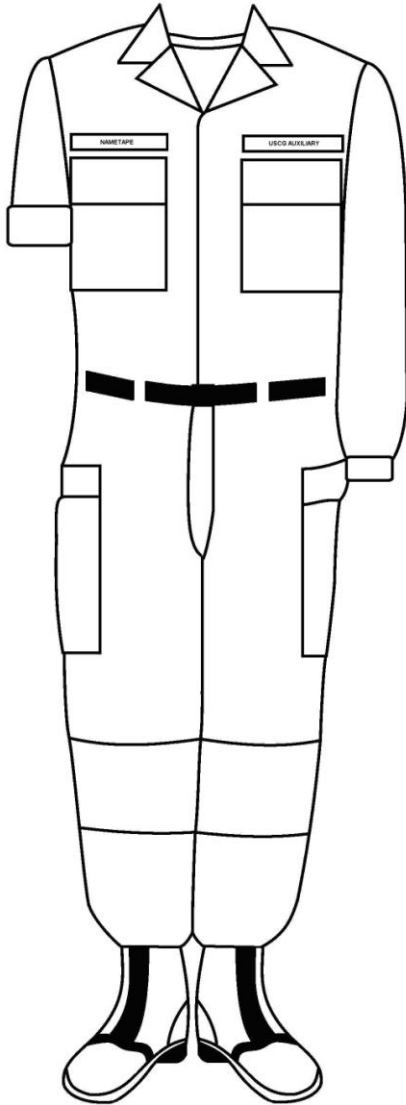
Since these positions are integral to active duty command cadre, only incumbent gold and silver badge Command Chiefs are authorized to wear their respective badges (embroidered only) on the ODU. They shall be worn in accordance with provisions of the Coast Guard Uniform Regulations, COMDTINST M1010.6 (series). Coast Guard active duty, Reserve, or retired personnel who also happen to be Auxiliarists may wear Coast Guard sew-on qualification insignia and devices earned through such service on their Auxiliary ODU uniform in accordance with Coast Guard uniform regulations.

H.4.h. Hat

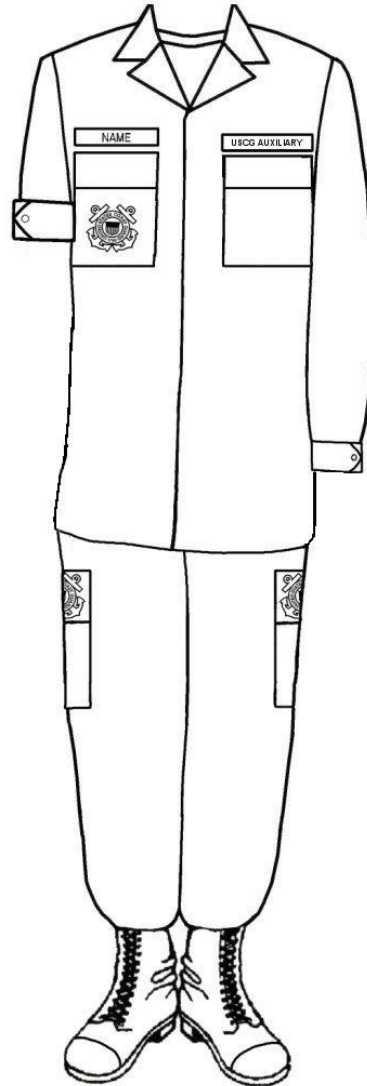
The Auxiliary ball cap and Coast Guard unit ball cap (if authorized) are the prescribed hats to be worn with this uniform. The blue working utility cap may be worn, but it will no longer be authorized for Auxiliary wear as of 31 December 2012. The Tilley hat may be worn in accordance with section D.3.f of this chapter. The cold weather cap may be worn in accordance with the provisions of section D.3.e of this chapter. The knit watch cap may be worn in accordance with the provisions of section D.3.g of this chapter.

H.4.i.
Accessories

The foul weather parka is the prescribed outer wear with this uniform. The trench coat, windbreaker, and work jacket may be worn with the ODU, but they will no longer be authorized for Auxiliary wear with it as of 31 December 2012. The cardigan sweater and the wooly-pully sweater may be worn with this uniform in accordance with the provisions of section D.6 and D.7 of this chapter.



Tucked Version



Untucked Version

**Figure 10-30
Operational Dress Uniform (Men and Women)**

HOW TO ROLL YOUR SLEEVES

STEP BY STEP INSTRUCTIONS:

Sleeves may be worn down with cuffs buttoned or with sleeves neatly rolled.

When properly rolled, the cuff should be approximately 2" above the elbow (mid-bicep) with only the cuff visible.

To properly roll the sleeves takes some patience and a little practice, but once mastered can be achieved without difficulty. Depending on an individual's size and sleeve length some sleeves may be rolled with one fold while others will take two.

1. Fully extend and flatten the sleeve on a level surface.



2.

Starting at the cuff turn sleeve inside out to armpit as shown. Take care to flatten the sleeve to remove any irregular folds or creases.



3.

To form the fold, roll the sleeve in half again to form two equal segments the width of the "cuff."



4.

Next, turn the cuff down over the fold. Pinching the outer edge of the sleeve to begin the fold will help to keep the fabric from slipping.



5.

Once in place, take care to flatten the sleeve to remove any irregular folds or creases. When properly done, only the cuff should be visible.

NOTE: To remove the roll, simply pull the lower edge of the cuff downward toward the wrist.